

C2648 Service Parts

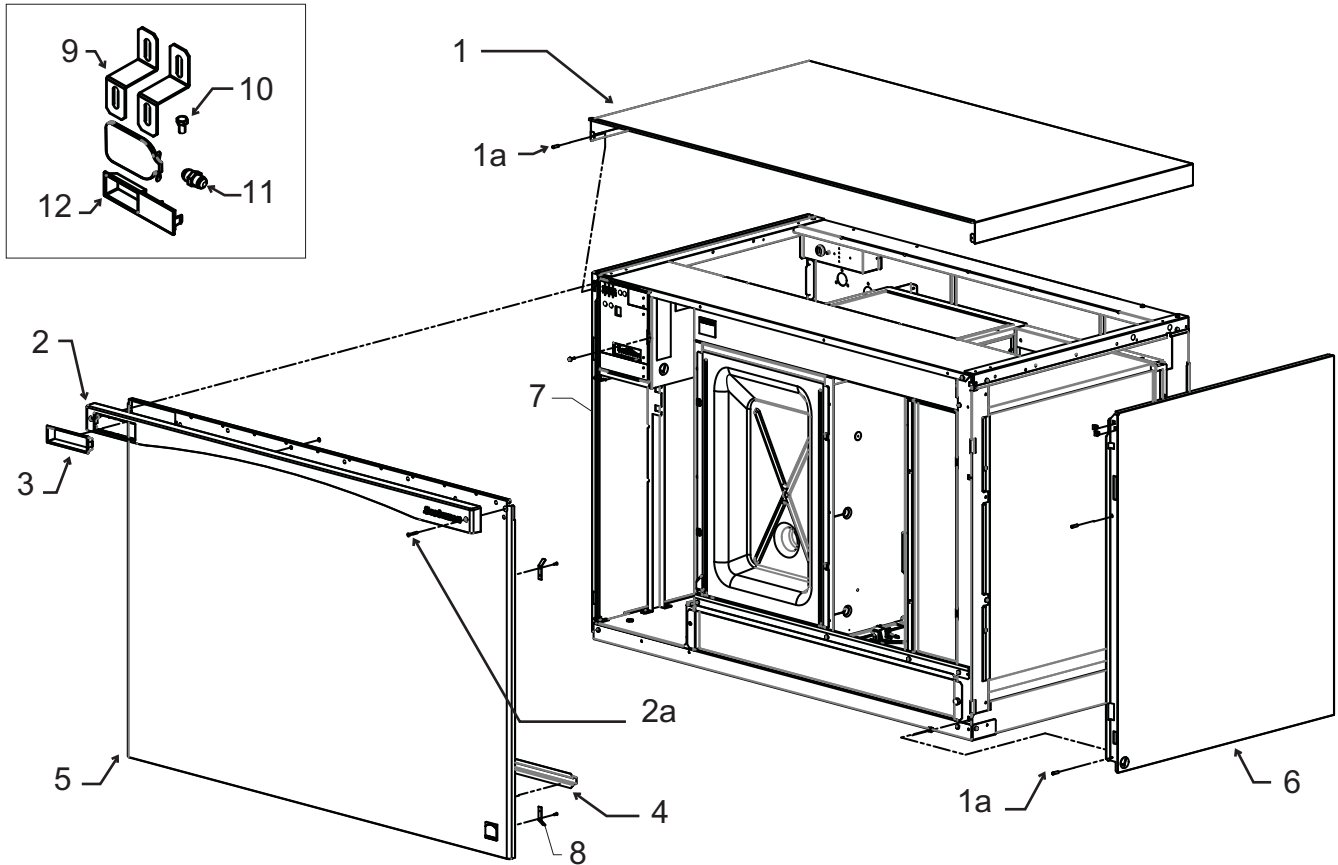
This is the service parts list for the C2648 and PRC241.

Parts Table of Contents

Exterior Panels	Page 2
Cabinet Structure	Page 3
Interior Components, Left View	Page 4
Interior Components, Right View	Page 5
Refrigeration System	Page 6
Freezing Compartments	Page 7
Control Box Components	Page 8
PRC241 Condenser	Page 9
Schematic Diagram	Page 10
Wiring Diagram	Page 11

C2648 Service Parts

Exterior Panels



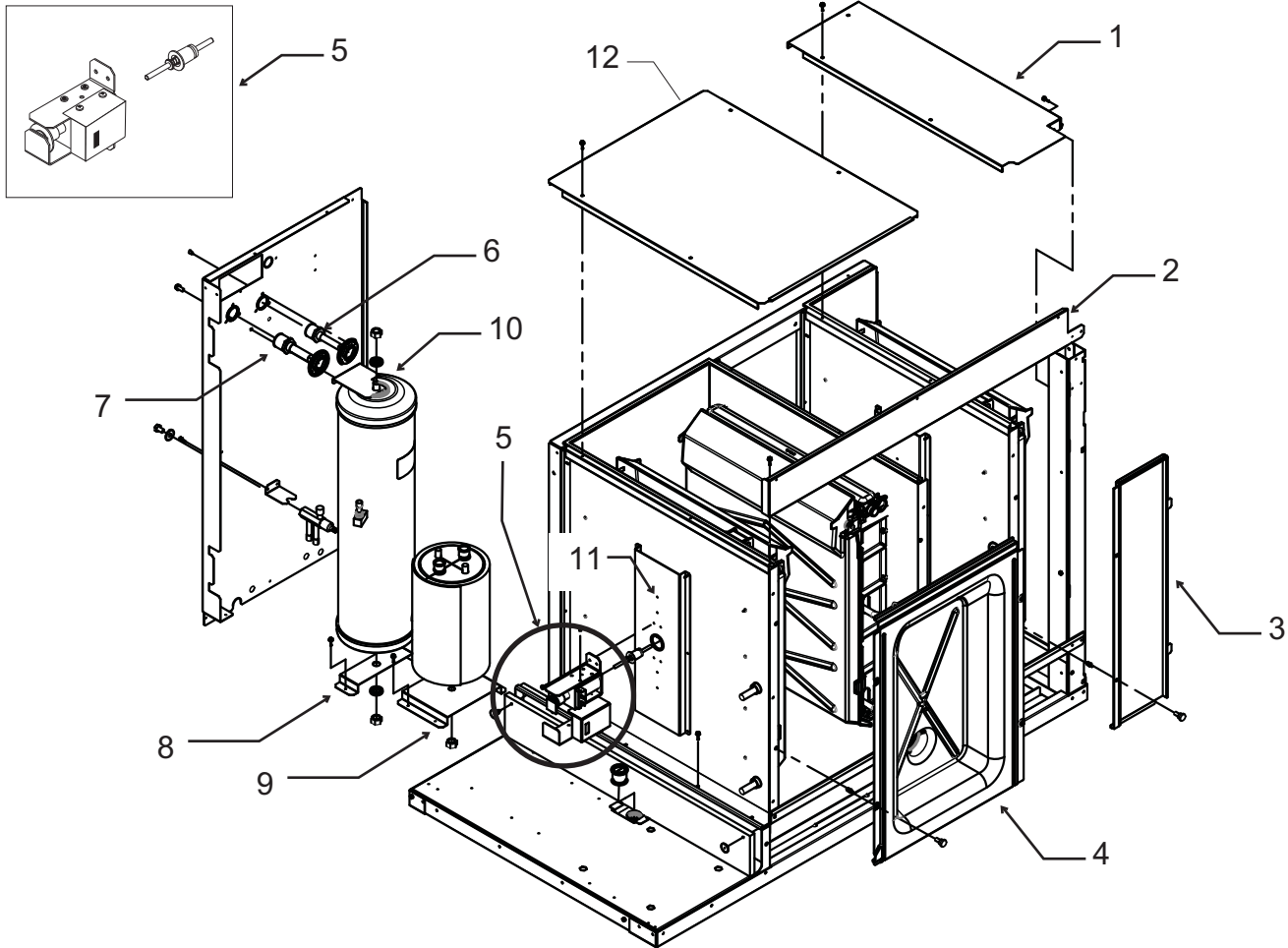
Item Number	Part Number	Description
1	A39777-021	Top panel
1a	03-1404-12	Screw
2	02-4214-03	Trim strip
2a	03-1735-03	Screw
3	02-4284-01	Bezel
4	A39045-001	Stiffener
5	A39740-021	Front panel assembly, includes items 2, 2a, 3, 4, and 8.
6	A39741-021	Right side panel
7	A39776-021	Left side panel
8	A39751-001	Side panel bracket

Items shipped in installation package:

9	A39708-001	Bracket
10	03-1405-13	Screw
11	16-1036-01	Flare union
12	02-4284-02	Bezel, half

C2648 Service Parts

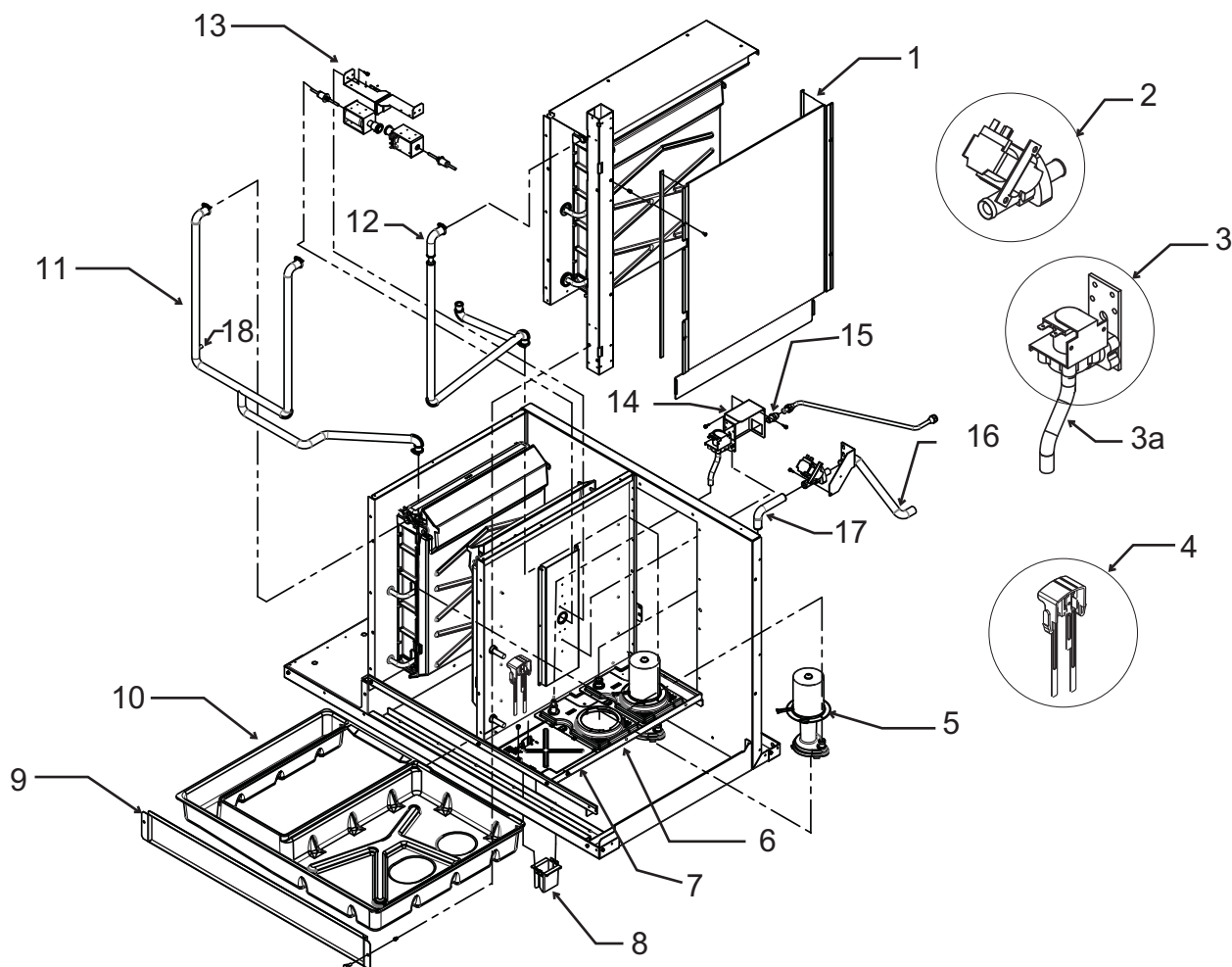
Interior Components, Left View



Item Number	Part Number	Description
1	A39704-001	Evap top, 1 plate
2	A39651-001	Evap top support
3	A39705-001	Evap cover, right
4	02-4184-01	Evap cover, center
5	12-3036-22	Harvest assist solenoid
6	16-0850-01	Quick connect, 1/2
7	16-0850-05	Quick connect, 5/8
8	A37212-001	Receiver bracket bottom
9	A37948-001	Accumulator bracket
10	A37211-001	Receiver bracket top
11	A39657-001	HA mounting bracket
12	A39706-001	Evap top, 2 plate

C2648 Service Parts

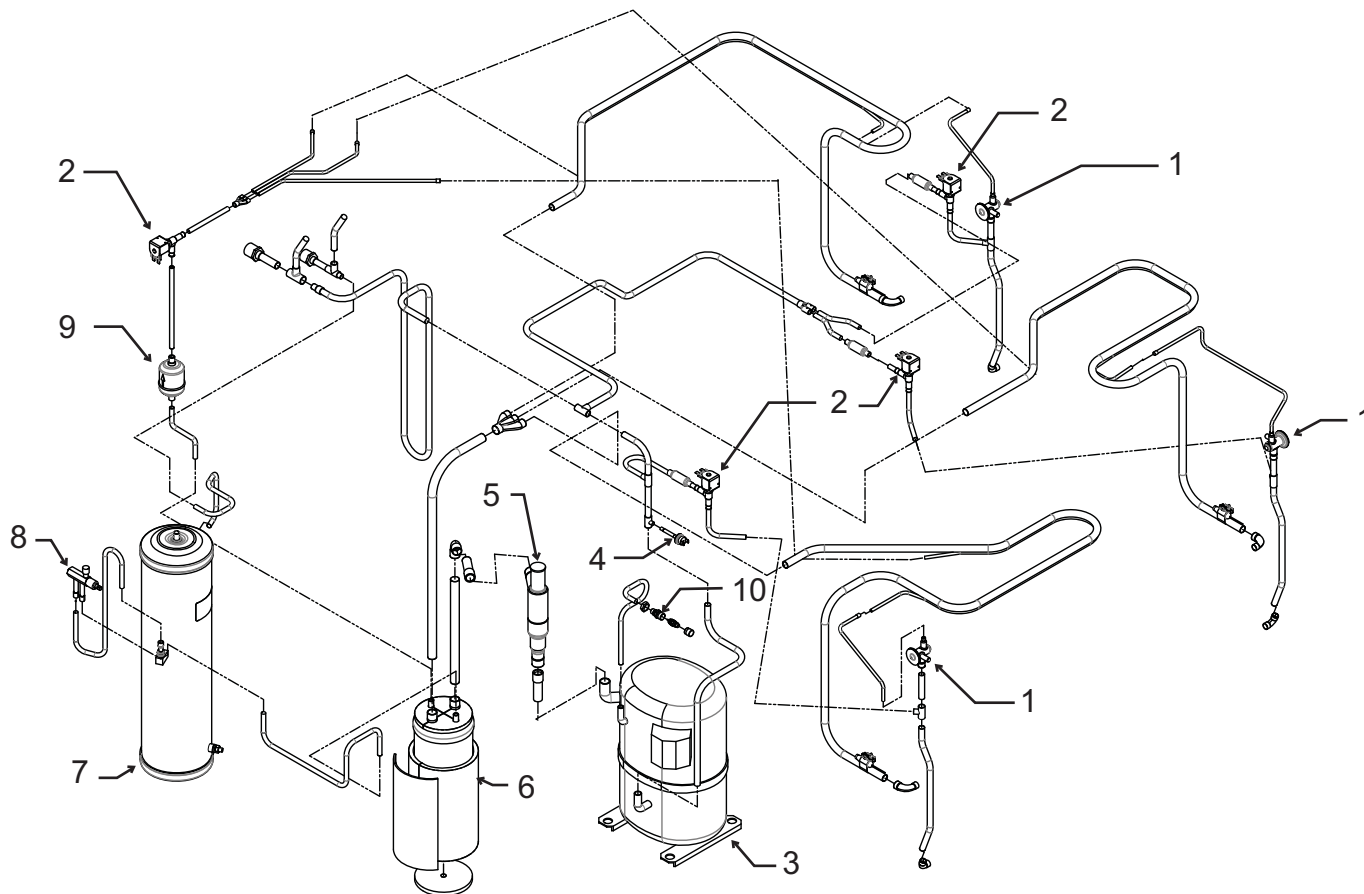
Interior Components, Right View



Item Number	Part Number	Description	Item Number	Part Number	Description
1	A39778-001	Right side liner	11	02-4552-01	Hose, 2 plates
2	11-0514-01	Purge valve	12	02-4553-01	Hose, 1 plate
3	12-2922-03	Inlet water sol valve	13	A39647-001	Harv assist bracket
4	A39829-001	Water level sensor	14	A39808-001	Inlet water vlve bracket
5	12-2920-22	Water pump	15	16-0355-00	Coupling half
6	02-4177-04	Pump bracket, front	16	A39655-002	Drain hose, out
	02-4177-05	Pump bracket, back	17	A39655-001	Drain hose, in
7	02-4166-02	Sump cover	18	11-0572-21	Temp sensor set
8	02-4332-01	Probe cover			
9	A39702-001	Sump cover, front			
10	02-4554-01	Sump			

C2648 Service Parts

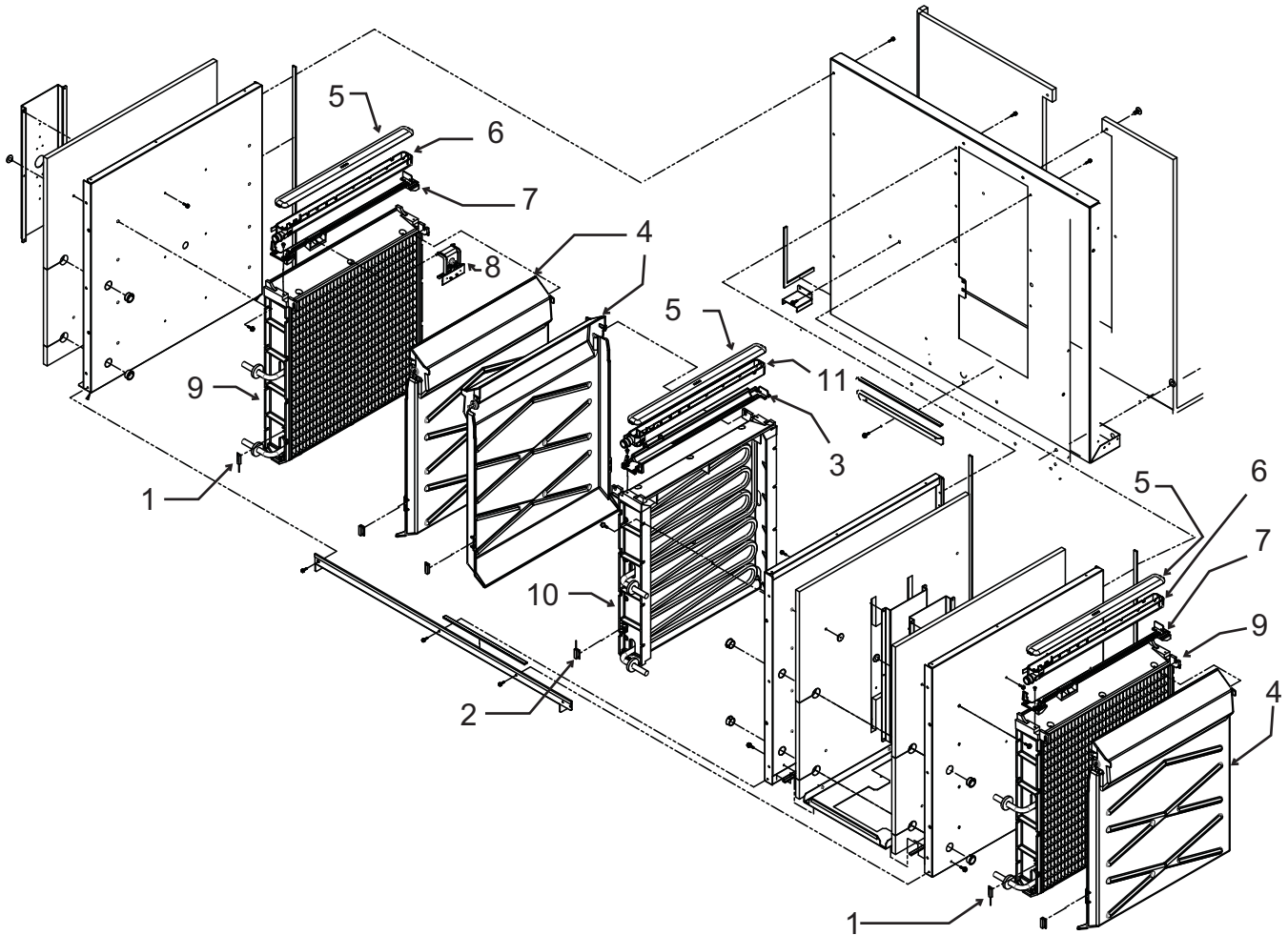
Refrigeration System



Item Number	Part Number	Description
1	16-1142-02	TXV
	19-0599-06	Insulation for TXV
2	11-0591-01	Hot gas valve / liquid line valve, no coil
2a	11-0590-02	Coil for HGV
3	18-8923-23	Compressor, 3 phase. Overload is internal. CS27K6E-TF5-276
4	11-0501-22	High pressure cut out
5	16-1096-23	OPR valve
6	16-1122-21	Accumulator with insulation
7	16-1177-01	Receiver
8	16-1030-01	Receiver outlet valve
9	02-4557-01	Dryer
10	16-1137-01	Access valve seat
	16-1139-01	Access valve core
	16-1140-01	Access valve cap

C2648 Service Parts

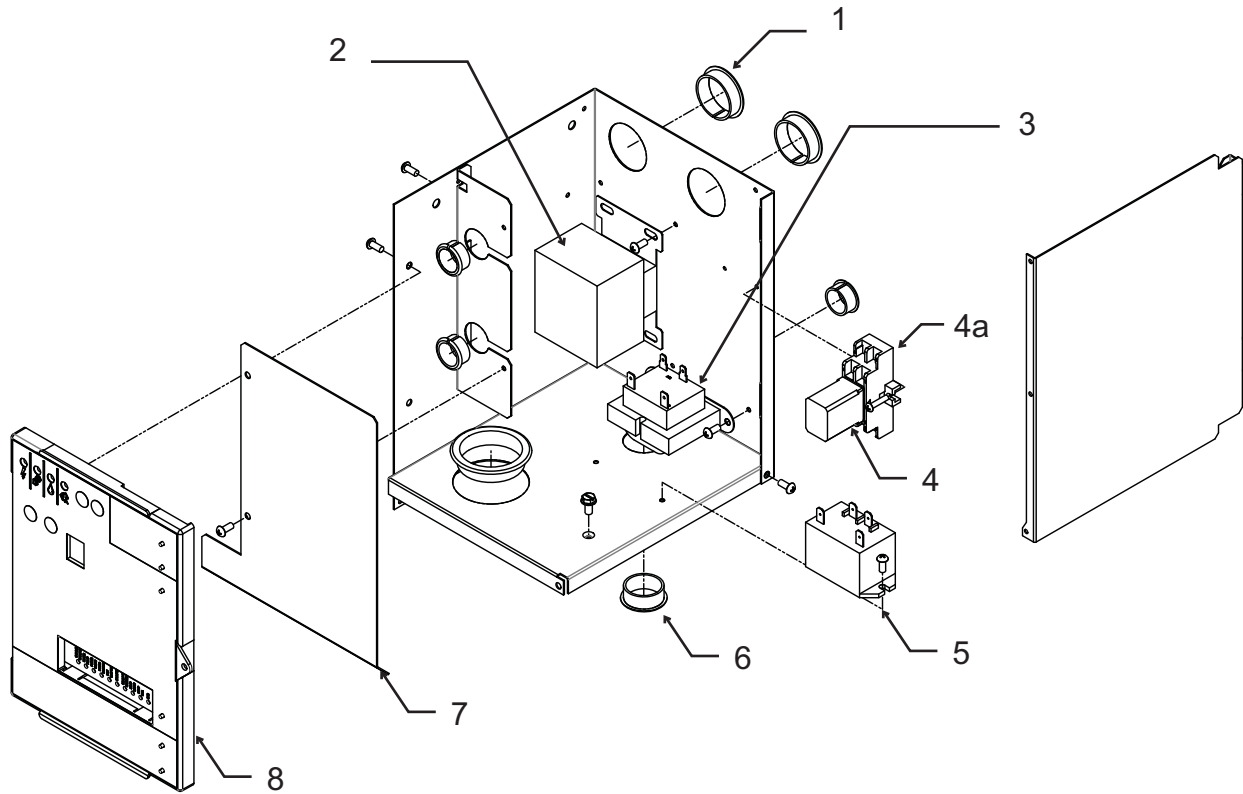
Freezing Compartments



Item Number	Part Number	Description
1	11-0563-06	Curtain switch
2	11-0563-03	Curtain switch
3	02-4205-02	Distributor mounting bracket
4	02-4611-21	Curtain, includes magnet
5	02-4065-01	Water distributor cover
6	02-4064-01	Water distributor
7	02-4205-01	Distributor mounting bracket
8	A39031-001	Ice thickness sensor
9	A38628-021	Left evaporator, small cube
	A38628-022	Left evaporator, medium cube
10	A38628-023	Right evaporator, small cube
	A38628-024	Right evaporator, medium cube
11	02-4064-02	Water distributor

C2648 Service Parts

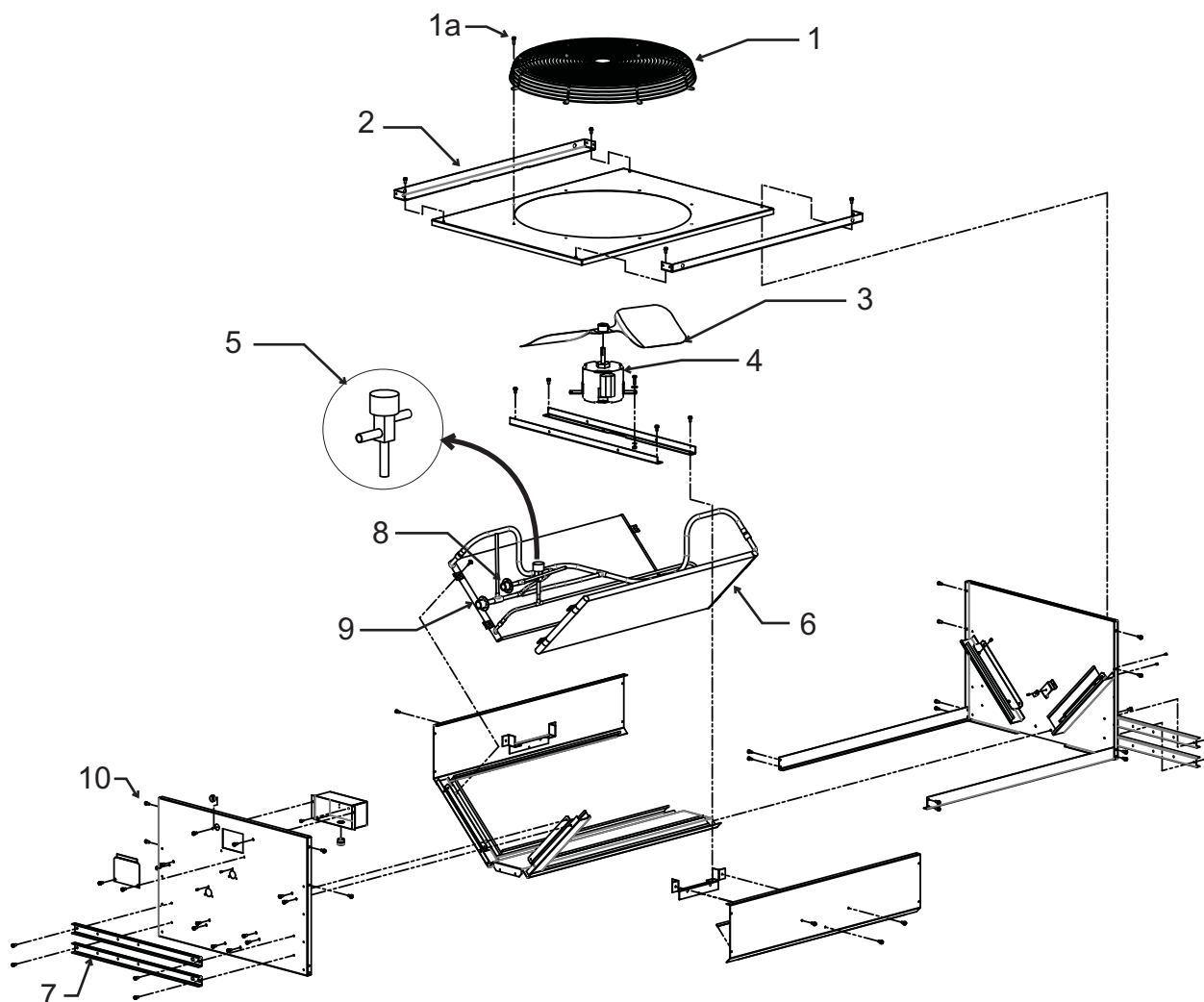
Control Box Components



Item Number	Part Number	Description
1	12-1213-20	Snap bushing
2	12-2533-02	Contactors
3	12-2924-02	Transformer
4	12-2949-03	Relay
4a	12-2949-02	Base
5	12-3031-01	High capacity relay
6	12-1213-11	Snap bushing
7	A39216-001	Barrier
8	11-0550-27	Controller
	02-4076-01	Control box door
	02-4189-01	Overlay label

C2648 Service Parts

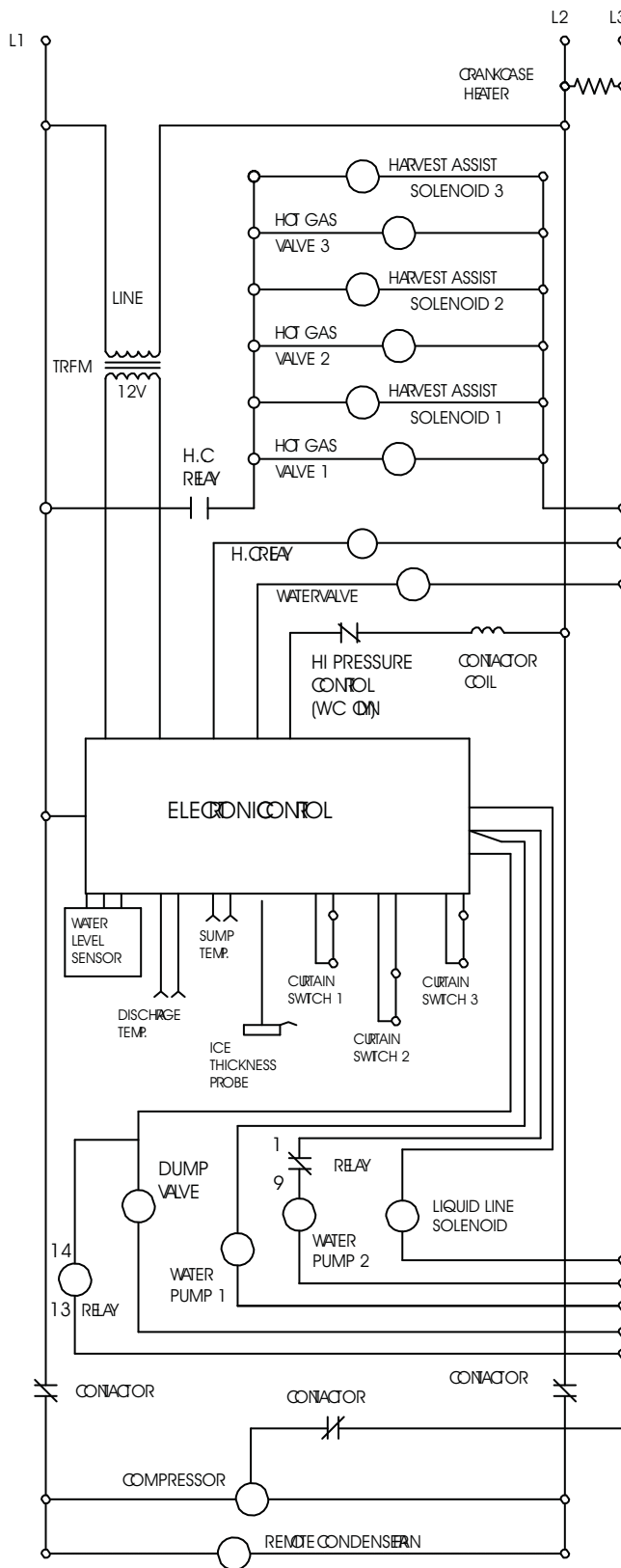
PRC241 Condenser



Item Number	Part Number	Description	Not Shown:
1	02-3770-01	Fan Guard	
1a	03-1645-03	Screw	KTEL4 set of 4 line set ends
2	A39736-001	Leg brace	
3	18-8820-01	Fan blade	
4	12-2717-01	Fan motor	
	18-8878-01	Fan motor capacitor	
5	11-0422-22	Head pressure valve	
6	18-8945-22	Condenser coil	
7	A37169-001	Leg	
8	16-0850-01	Liquid quick connect	
9	16-0850-05	Disch. quick connect	
10	03-1645-01	Screw, fits legs & other	

C2648 Service Parts

Schematic Diagram



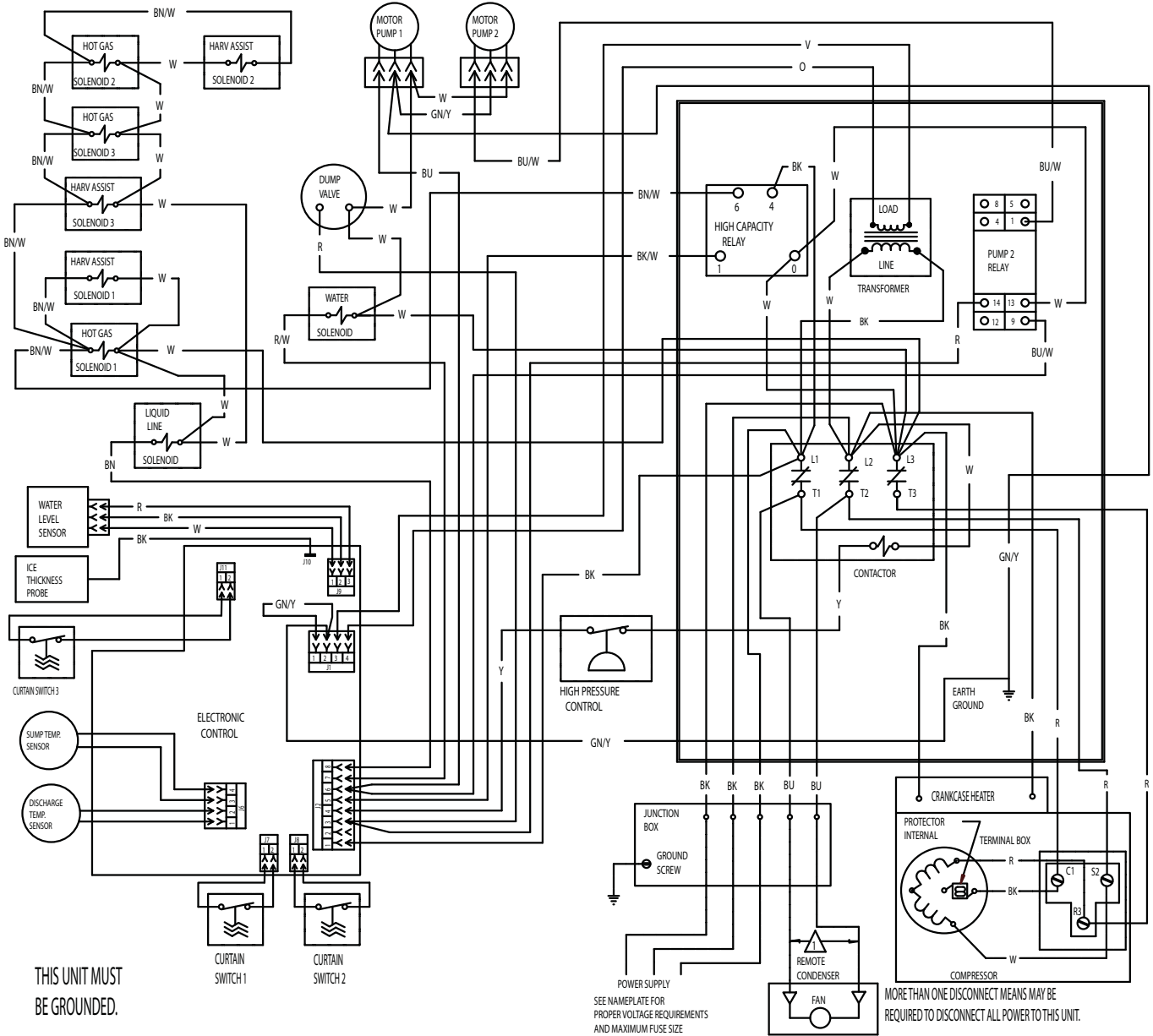
C2648 Service Parts

Wiring Diagram

17-3317-01

USE COPPER CONDUCTORS ONLY

▲ DASHED LINES INDICATE FIELD WIRING WHICH MUST BE INSTALLED IN ACCORDANCE WITH THE NATIONAL ELECTRICAL CODE AND ALL STATE AND LOCAL CODES.



THIS UNIT MUST BE GROUNDED.

SEE NAMEPLATE FOR PROPER VOLTAGE REQUIREMENTS AND MAXIMUM FUSE SIZE

MORE THAN ONE DISCONNECT MEANS MAY BE REQUIRED TO DISCONNECT ALL POWER TO THIS UNIT.