
Instructions

Kit Number: KDIL-N-ID3

Kit Purpose: To lower the ice level in an ED300 ice dispenser when a Scotsman Nugget ice machine is stacked on top of the dispenser.

Kit Contents:

	Bin thermostat	Baffle/cap tube bracket, grommets & fasteners	Switch body mounting bracket A	Switch body mounting bracket B	Wire
KDIL-N-ID3	11-0353-23	included	For NME454, NME654 or NME954	For NME1254	included

Applications & Other Requirements:

- NME454, NME654, NME954 or NME1254 onto ED300. Also requires Cornelius adapter and agitator kit.

Installation Sequence:

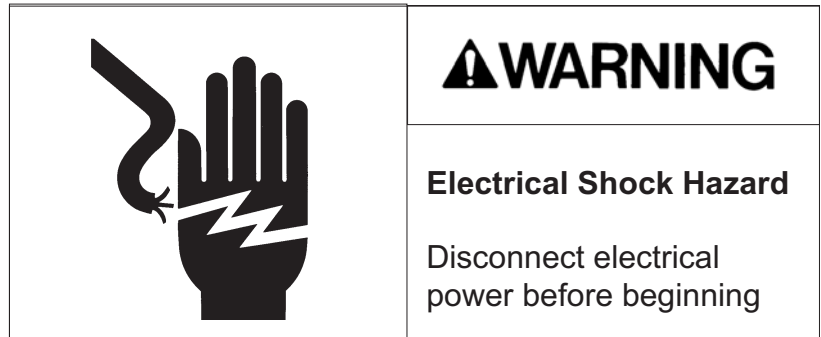
1. Agitators
2. Diverting plates
3. Adapter
4. Ice separator and thermostat bracket
5. Ice machine
6. Thermostat

Installation: Dispenser

1. Disconnect electrical power from both the ice machine and the dispenser.

2. Install adapter onto ED300 per its instructions.

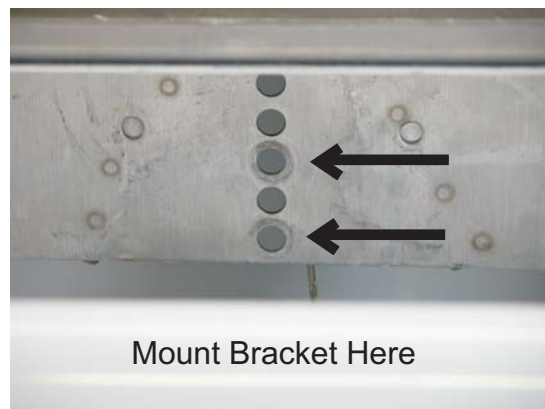
3. Install triangular separator into adapter per its instructions.



4. Attach thermostat bracket to separator, using bolts from the Scotsman kit. Bracket mounts inside of front separator flange, and it angles back to the dispenser. Be sure grommets are installed onto bracket's lower holes.

5. Install left and right diverting plates per supplied instructions.

6. Place nugget ice machine onto adapter. Be sure to seal the ice machine to the adapter. Note: sealant supplied with adapter.



Mount ice machine onto dispenser.

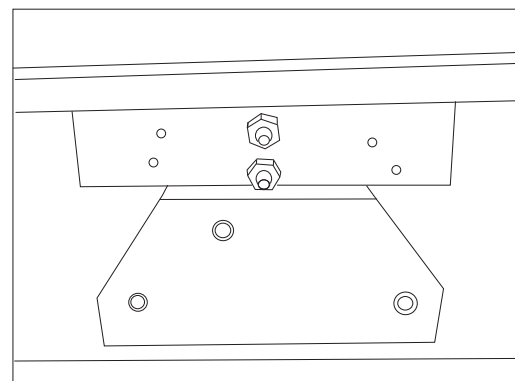
Ice Machine

7. Remove front panel.

8. Remove control box cover.

9. Uncoil the bin thermostat capillary tube.

10. Route the cap tube through a nearby snap bushing in the control box.



Angle Bracket Back To Ice

Note: Refer to table below to select thermostat mounting and cap tube routing method.

	NME1254	NME454, NME654 and NME954
Thermostat switch body mounting	Mount to supplied bracket B	Mount to supplied bracket A
Cap tube routing	Route through hole in base	Route through hole in base

11. Mount the thermostat inside the control box to the supplied bracket. Use the proper bracket from the kit.

A. Remove lowest mounting screw from the back of the control box.

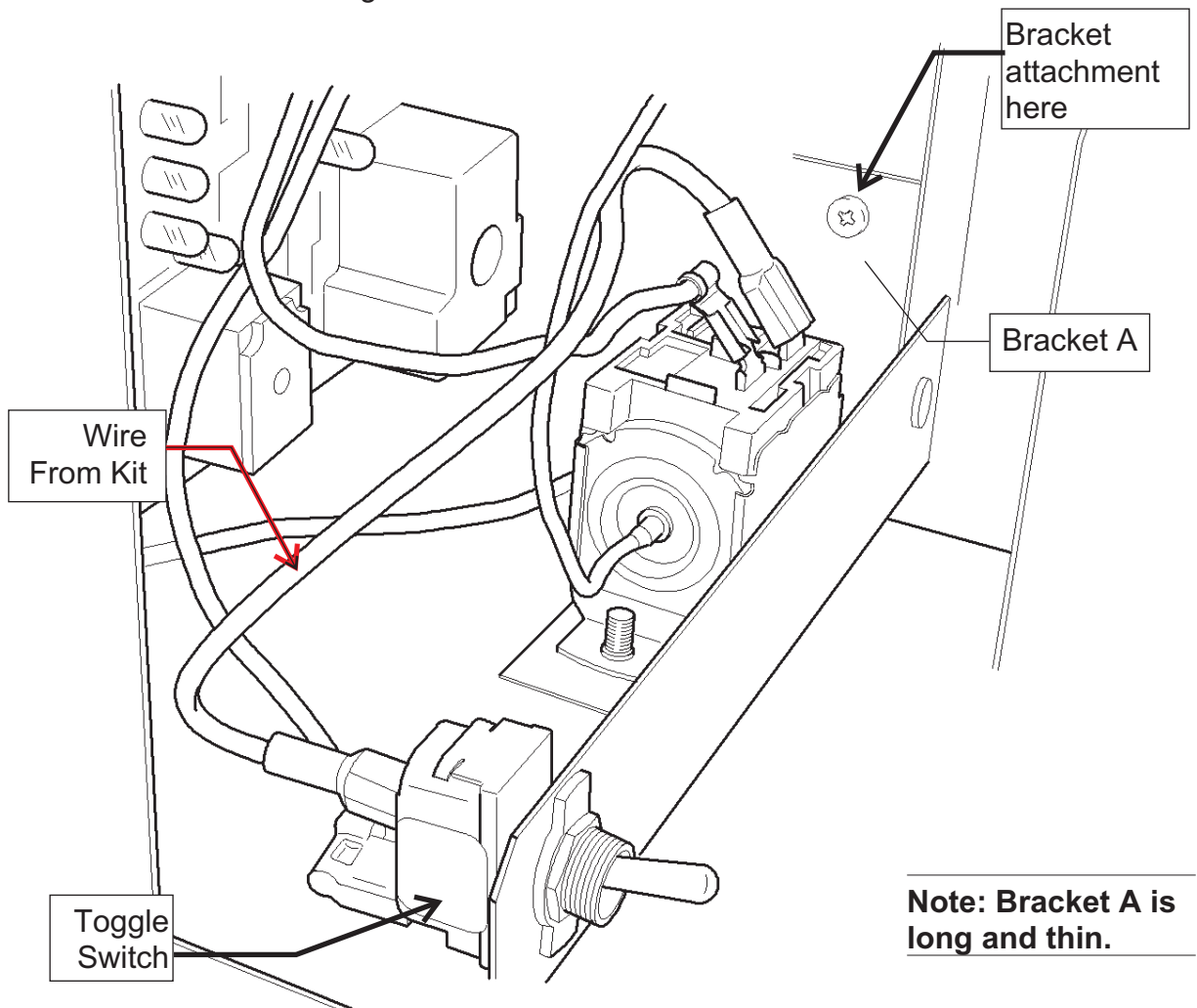


Figure A, Using Bracket A (for NME454, NME654 or NME954)

B. Place the thermostat and bracket in the control box as shown in figure A or B. Attach to the control box with the screw previously removed.

12. Connect the wire from the kit to one terminal of the bin thermostat.

13. Disconnect top wire from toggle switch.

14. Connect wire removed in step 13 to open terminal on bin thermostat.

15. Connect wire from bin thermostat to open terminal on toggle switch.

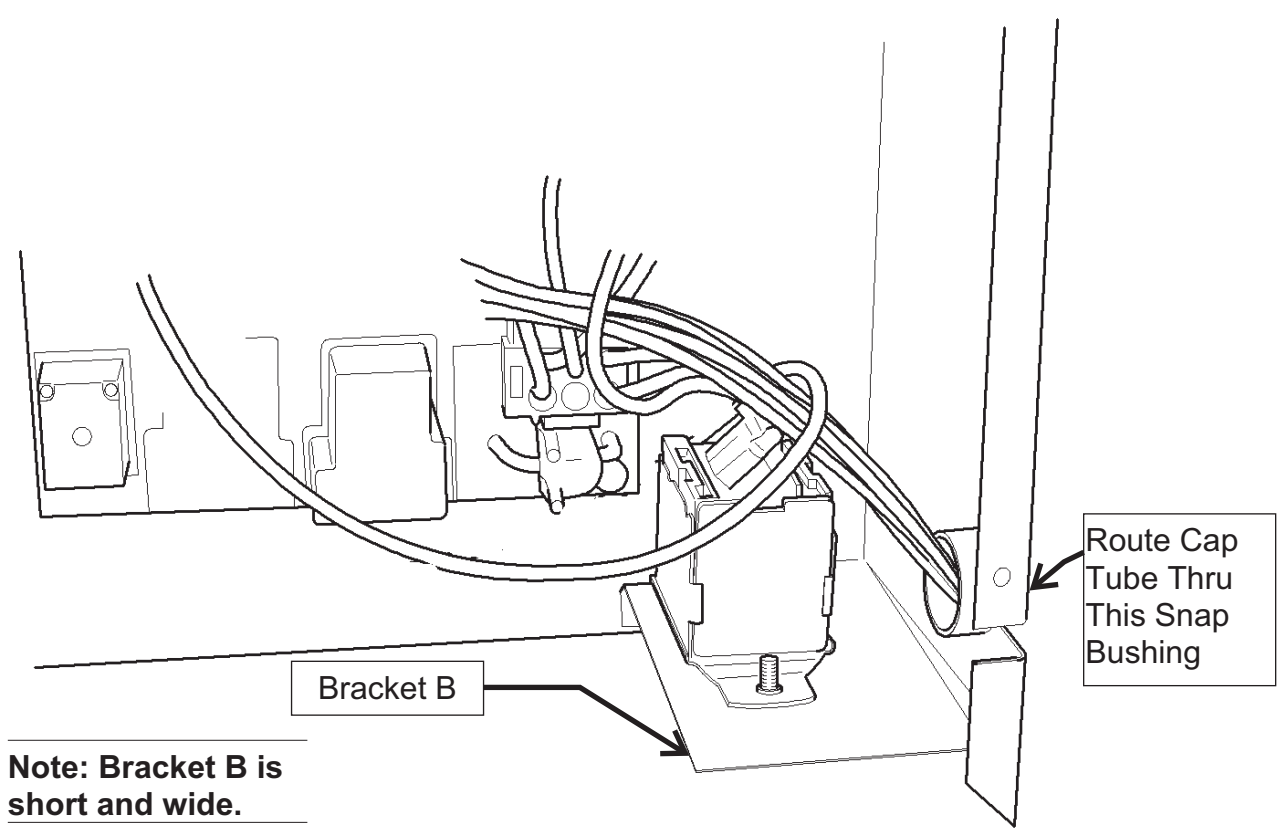
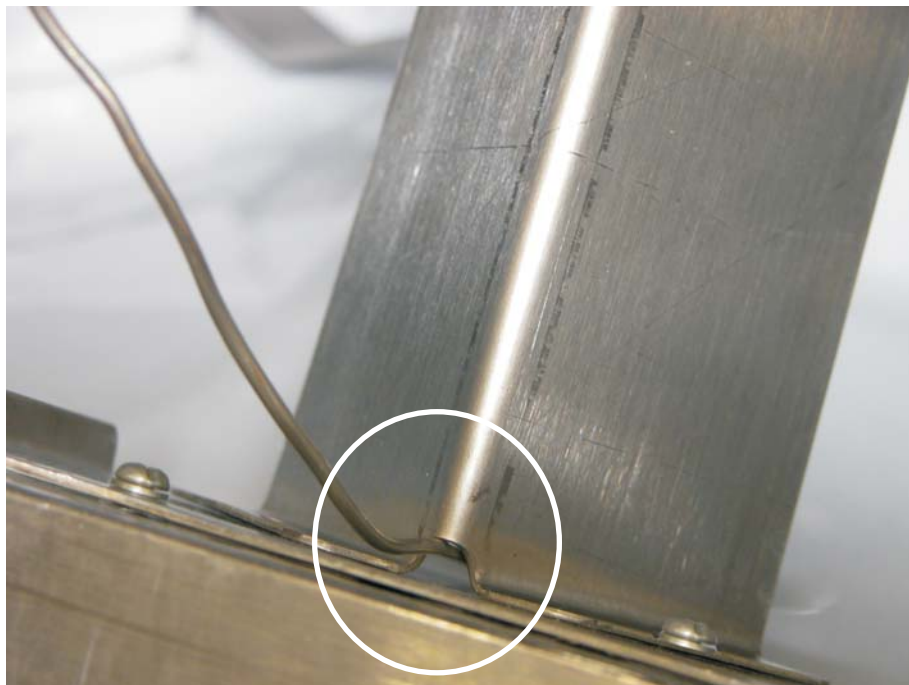


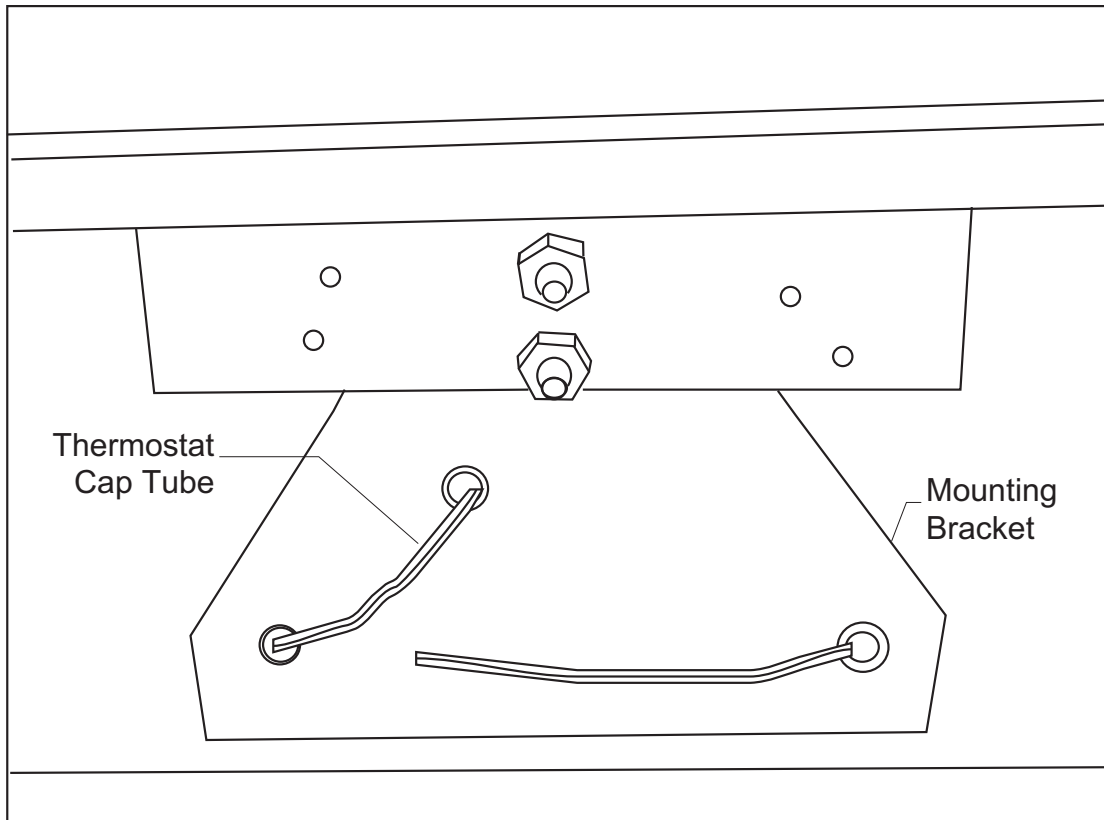
Figure B, using Bracket B (for NME1254)

16. Route bin thermostat capillary tube through hole in ice machine base.

Thermostat Bracket

17. Route thermostat cap tube thru the hole in the top of the separator and down into the dispenser. Pull all of it thru.





18. Thread the cap tube thru the holes in the bracket as shown. A horizontal loop of cap tube will be on the ice side of the bracket.

19. Position the NME954 ice machine 15.75" from the left of the adapter. This will allow the ice to fall into the dispenser equally to the left and right. NME1254 center the ice chute over the separator, adjust cabinet position left and right until ice fill is equal.

Dispenser:

20. Set the agitation for 2 seconds on, 3 hours off.

Reconnect electrical power.

Return all panels and covers to their normal positions and secure with the original screws.