

WATER GLASS FILLER KIT

Installation Instructions

WARNING: Disconnect power to unit before proceeding with installation

1. Prepare unit as follows:

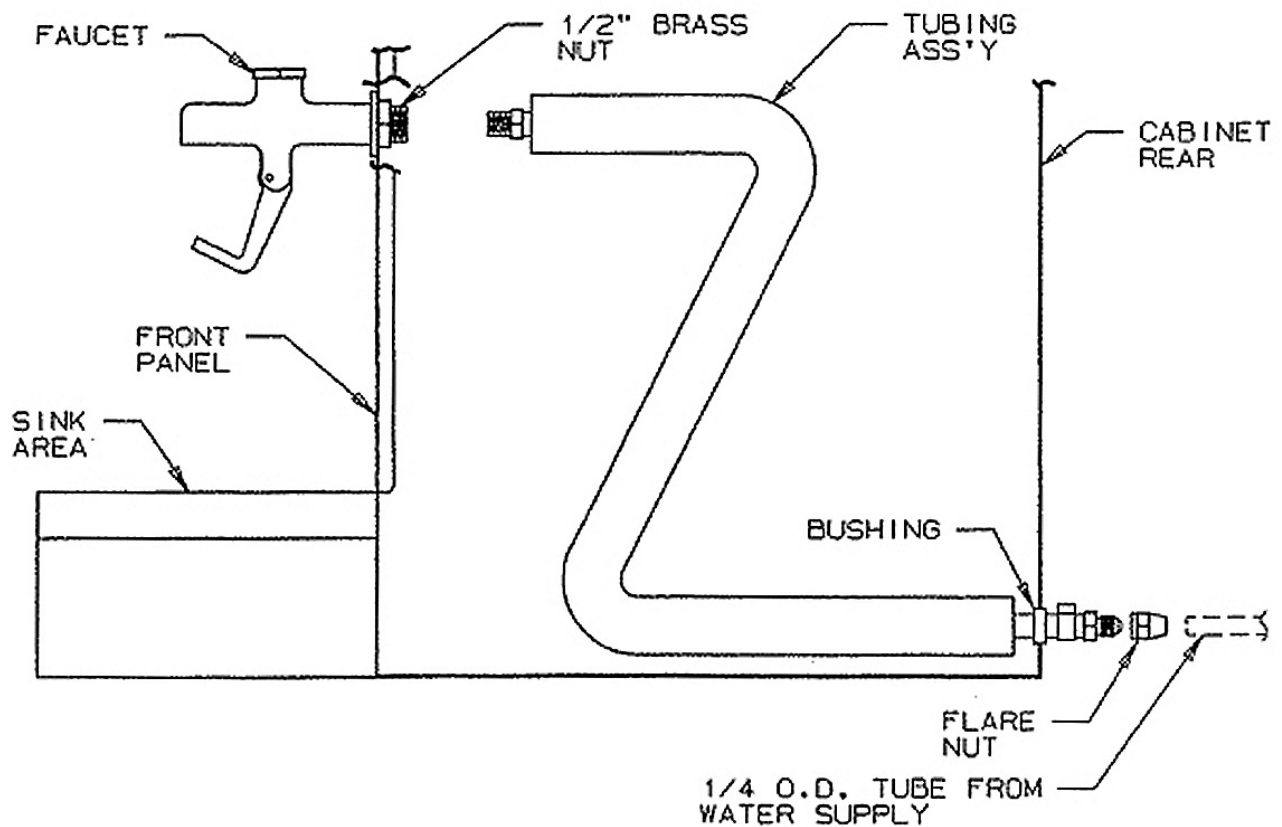
- Remove lower front panel.
- Locate new holes in front panel.

2. Install faucet and tubing assembly as shown below.

3. Connect field water supply to $\frac{1}{4}$ male flare fitting on tubing assembly. Apply water pressure and check all connections for leaks. Check faucet for proper operation. Check that tubing assembly does not interfere with wiring or electrical components.

4. Carefully reinstall panels on unit.

FIG. 1 - INSTALLATION



WATER GLASS KIT - CONTINUED

ID150, IOD150

| | |
|---|------|
| A | 4" |
| B | 2.5" |

ID200, IOD200, ID250, IOD250

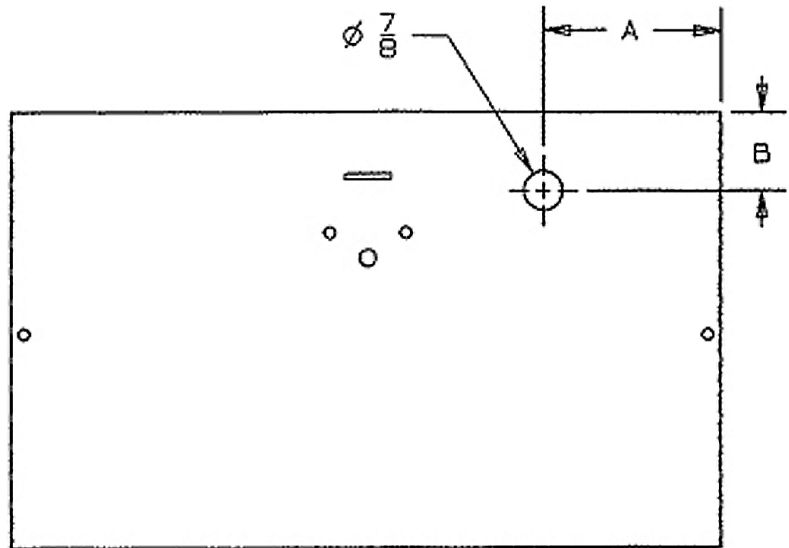
| | |
|---|--------|
| A | 6 1/8" |
| B | 3 1/8" |

Water inlet can be routed either from the back or from underneath the dispenser.

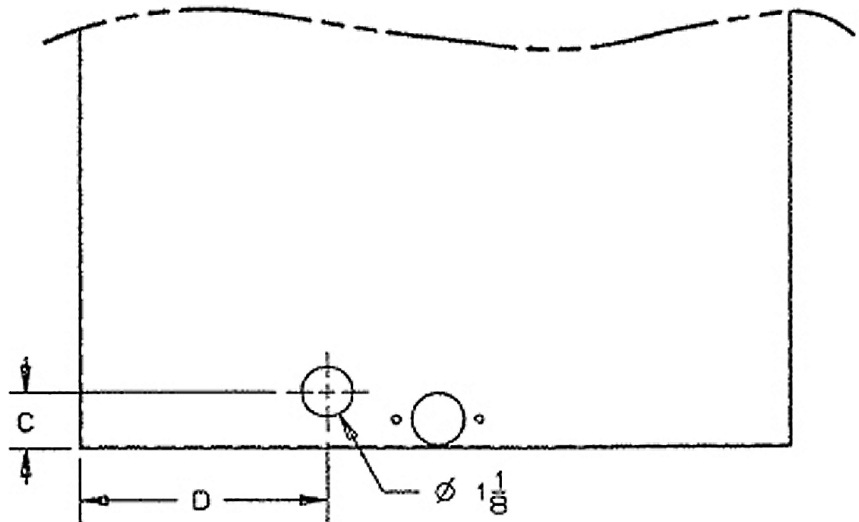
If from the back, remove the back and bottom access panels.

If from below, only remove the bottom access panel.

A hole is not needed at the intersection of C and D, unless the back access panel is retained.



LOWER FRONT PANEL
FRONT VIEW



CABINET
PARTIAL REAR VIEW