



CU0715 - 70 lb Self-Contained Ice Machine

Self-Contained Under Counter Cuber with Storage



Features and Benefits

Reliability:

- 3 Year parts and labor warranty.
- Assembled in the USA.
- Corrosion resistant exterior.

Ease of Use:

- Slide back door allows easy access to ice in the bin.
- Intuitive control panel allows for quick and easy operation.
- Ice scoop included.

Compact Design:

- Only 15" wide, the ice maker can be placed in the tightest locations.
- Optional floor mount kit allows for installation under 34" ADA counter tops.

High Production:

- Produces up to 80 lb (36 kg) per day and stores 36 lb (16 kg), meeting the ice demands for many different applications.

Quality Ice:

- Unique evaporator produces crystal clear cubes.

Environmentally Friendly:

- Meets US federal energy efficiency requirements.
- Meets US Safe Drinking Act low lead requirements.
- Non-ozone depleting R-134A refrigerant.



24 Hour Volume Production

Air Cooled

70°F/21°C 50°F/10°C	Air Water	90°F/32°C 70°F/21°C
80/36 lb/kg		58/26 lb/kg

Intuitive Controls



Clear Cube Evaporator Technology



Optional Kit for ADA Applications -Unit seals to the floor



31.9"
(81.1 cm)



Cube Ice



Large, slow-melting ice form, ideal for beverages.

Cube Dimensions
7/8" x 7/8" x 7/8"
(2.22 x 2.22 x 2.22 cm)



Certification



Warranty

- 3 years parts and labor on all components.
- Warranty valid in North, South & Central America for commercial installations.
- Contact factory for warranty in other regions.
- Residential Applications: 1 year parts and labor

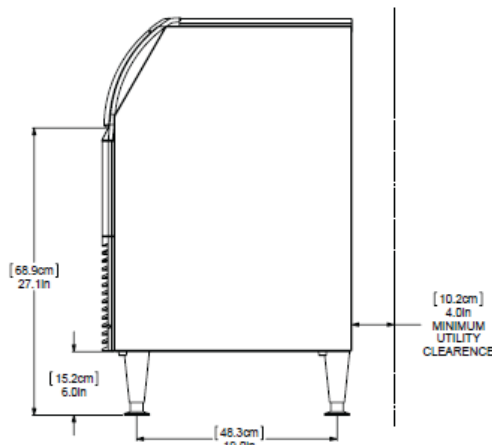
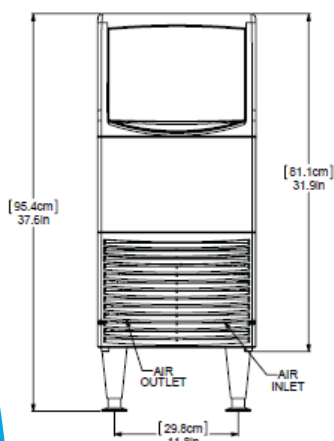
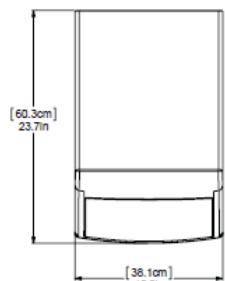
Scotsman®

- 101 Corporate Woods Parkway, Vernon Hills, IL 60061 •
- 1-800-SCOTSMAN • Fax: 847-913-9844 • www.scotsman-ice.com • customer.relations@scotsman-ice.com •

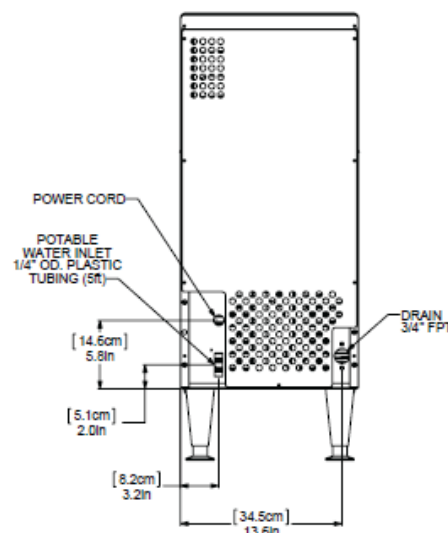
CU0715 - 70 lb Self-Contained Ice Machine

CU0715 - 70 lb Self-Contained Ice Machine

Self-Contained Under Counter Cuber with Storage



Recommended Minimum Clearance:
Side: 1/8"
Top: 1/4"
Back: 4"



Specifications

Model Number	Condenser Unit	Storage Capacity lb/kg	Basic Electrical Volts/Hz/Phase	Max. Fuse Size or HACR Circuit Breaker (amps)	Circuit Wires	Min. Circuit Ampacity	Energy Consumption kWh/100 lb (45.4 kg) 90°F(32°C)/70°F(21°C)	Potable Water Usage Gallons/100 lb (liters/45.4 kg) 90°F(32°C)/70°F(21°C)
CU0715MA-1	Air	36/16	115/60/1	15	2	Cord	11.0	30/114
*CU0715MA-32	Air	36/16	220/60/1	15	2	Cord	11.0	30/114
CU0715MA-6	Air	36/16	220-240/50/1	15	2	Cord	11.0	30/114

*Configured for InMetro requirements



All Models

Dimensions (W x D x H):

Unit: 15" X 24" X 38"
(38.1 x 61.0 x 96.5 cm)

Includes 6" (15.24 cm) adjustable legs

Shipping Carton: 17" x 27" x 38"
(43.2 x 68.6 x 96.5 cm)

Shipping Weight: 96 lb / 44 kg

BTUs per hour: 2,300

Refrigerant: R-134A



Accessories

Model Number	Description
KUFM15	For ADA applications. Floor mount kit lowers overall height to 31.9"

Scotsman recommends all ice machines have water filtration. See Scotsman water filter specification sheet for details.



Operating Requirements

	Minimum	Maximum
Air Temperatures	50°F (10°C)	100°F (38°C)
Water Temperatures	40°F (4.4°C)	100°F (38°C)
Water Pressures	15 PSIG (1.4 bar)	80 PSIG (5.5 bar)
Electrical Voltage	-5%	+10%

Specifications and design are subject to change without notice.

CU0715 - 70 lb Self-Contained Ice Machine