



F1222 - 1200lb Flake Ice Machine

Prodigy Plus® Flake Ice Machine

Superior performance with every cup.

Now the soft, chewable flake ice that customers love is available with more innovative technology than ever before. With next-generation diagnostics like AutoAlert™ indicator lights on the new Scotsman Prodigy Plus® flake ice machines, operators can help ensure superior performance while enjoying maximum efficiency — every day. And with features like advanced ice level control, a small operational footprint and easy-access service from the front panel, Prodigy Plus® flake ice machines are the smart choice for today's busy food-service environments.



The Prodigy Plus® difference.

- AutoAlert™ indicator lights for better visibility
- Operational footprint among the industry's smallest
- Industry-exclusive QR code instantly connects users to service information and warranty history
- Front-located air filter for more efficient operation
- Self-aligning front panel for easy access to key components
- Smart-Board™ advanced feature module available for additional diagnostic capabilities
- Optional Vari-Smart™ ice level control allows operators to customize ice levels
- Antimicrobial protection guards internal surfaces between cleanings
- A full range of water- and energy-saving features



24 Hour Volume Production

Air Cooled		Remote Cooled			Water Cooled			
70°F/21°C	Air	90°F/32°C	70°F/21°C	Air	90°F/32°C	70°F/21°C	Air	90°F/32°C
50°F/10°C	Water	70°F/21°C	50°F/10°C	Water	70°F/21°C	50°F/10°C	Water	70°F/21°C
1100/499		878/395	1250/567		907/409	1240/562		967/436
lb/kg		lb/kg	lb/kg		lb/kg	lb/kg		lb/kg



Modular Bin Options



F1222 side by side on B948S

Model Number*	Dimensions W" x D" x H"	Bin Application Capacity		Finish	Ship Weight lb/kg
		lb/kg			
B948S	48 x 34 x 44**	893/406		Metallic	209/95
BH1100BB-A	48 x 34 x 50**	1100/499		SS w/ GBB†	280/127
BH1100SS-A	48 x 34 x 50**	1100/499		Stainless Steel	280/127
BH1300BB-A	60 x 34 x 50**	1400/635		SS w/ GBB†	310/140
BH1300SS-A	60 x 34 x 50**	1400/635		Stainless Steel	310/140
BH1600BB-A	60 x 34 x 62**	1755/796		SS w/ GBB†	370/168
BH1600SS-A	60 x 34 x 62**	1755/796		Stainless Steel	370/168

*Contact Scotsman for bin top requirements. **Add 6" Height for bin legs.
† Stainless steel with galvanized back & bottom.



Flake Ice



Cools more quickly than other ice forms. Ideal for seafood and produce displays.



Certification



Warranty

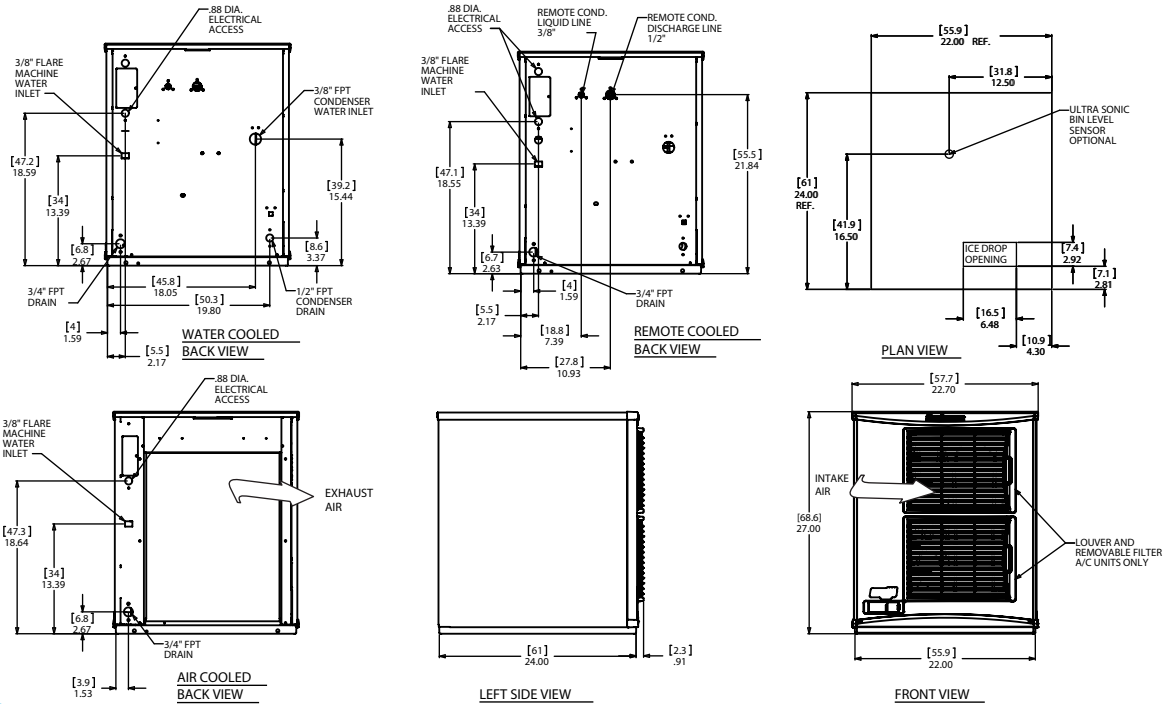
- 3 years parts and labor on all components.
- 5 years parts on the compressor.
- Warranty valid in North, South & Central America for commercial installations.
- Contact factory for warranty in other regions.
- Residential Applications: 1 year parts and labor

F1222 - 1200lb Flake Ice Machine



F1222- 1200lb Flake Ice Machine

Prodigy Plus® Flake Ice Machine



Specifications

Model Number	Condenser Unit	Basic Electrical Volts/Hz/Phase	Max. Fuse Size (amps)	Circuit Wires	Min. Circuit Ampacity	Energy Consumption kWh/100 lb (45.4 kg) 90°F(32°C)/70°F(21°C)	Water Usage Gallons/100 lb (liters/45.4 kg)		Energy Star®
							Potable 90°F(32°C)/70°F(21°C)	Condenser 90°F(32°C)/70°F(21°C)	
F1222A-32	Air	208-230/60/1	15	2	13.2	3.22	12.0/45.5	-	✓
F1222R-32	Remote	208-230/60/1	15	2	13.0	3.34	12.0/45.5	-	✓
F1222W-32	Water	208-230/60/1	15	2	12.0	3.10	12.0/45.5	105/397.5	✓
F1222A-3	Air	208-230/60/3	15	3	10.5	3.22	12.0/45.5	-	✓
F1222R-3	Remote	208-230/60/3	15	3	10.3	3.34	12.0/45.5	-	✓



All Models

Dimensions (W x D x H):

Unit:	Individual 22.9" x 24" x 27" (58.2 x 61.0 x 68.6 cm)
	Side by Side 45.8" x 24" x 27" (116.3 x 61.0 x 68.6 cm)
Shipping Carton:	25.5" x 27.5" x 32.5" (64.8 x 69.9 x 82.6 cm)

Shipping Weight: 220 lb / 100 kg BTUs per hour: 10,500

Refrigerant: R-404A



Accessories

Model Number	Description
KVS	Vari-Smart™ Ice Level Control - Program ice bin levels to match ice needs.
KSBU	Smart-Board™ Advanced Control - Use additional operational data for fast diagnosis.
KSBU-N	Smart-Board™ Advanced Control with Network - Network capable.
ERC311-32	Remote condenser for F1222R, 208-230/60/1 - Consult remote condenser spec sheet for details.
BRTE10	Line set, 10ft, brazing required.
BRTE25	Line set, 25ft, brazing required.
BRTE40	Line set, 40ft, brazing required.
BRTE75	Line set, 75ft, brazing required.
KPAS	Prodigy Advanced Sustainability Kit - Includes KVS and KSBU - N

Scotsman recommends all ice machines have water filtration. See Scotsman water filter specification sheet for details.



Operating Requirements

	Minimum	Maximum
Air Temperatures	50°F (10°C)	100°F (38°C)
Water Temperatures	40°F (4.4°C)	100°F (38°C)
Remote Cond. Temps	-20°F (-29°C)	120°F (49°C)
Water Pressures	20 PSIG (1.4 bar)	80 PSIG (5.5 bar)
Electrical Voltage	-5%	+10%

Specifications and design are subject to change without notice.

F1222 - 1200lb Flake Ice Machine

• 101 Corporate Woods Parkway, Vernon Hills, IL 60061 •

• 1-800-SCOTSMAN • Fax: 847-913-9844 • www.scotsman-ice.com • customer.relations@scotsman-ice.com •