

ACTUATOR MOTOR REPLACEMENT INSTRUCTIONS FOR ALL UNITS

DOCUMENT #307 1041 01

CAUTION! RISK OF PERSONAL INJURY, PROPERTY DAMAGE, EQUIPMENT FAILURE OR FIRE

Refer all maintenance to qualified personnel.
Disconnect power before servicing equipment.
Read and understand all instructions before proceeding.

All 60 series – GT36X, GT56X, GB56X, GB1064X

1. Remove Cam Pin – tap open end of pin until it is flush with plastic cam arm, hold rounded end with channel locks and pull pin out (you may have to tap channel locks w/hammer if tight coming out). If pin is broken inside shaft, tap out with 1/8 in. punch.
2. Remove front cam arm assembly from actuator motor shaft.
3. Disconnect wires that go from motor to capacitor (please note the position of the wires). (if you forget: yellow wires are always on the left side of the capacitor 110v or 220v units) (GT36x models only – no capacitor, cut wires as close to the connector as possible). Remove the wires from the right side of the capacitor only if changing out capacitor.
4. Remove the two screws that are holding the cam switch bracket (left two screws). Let cam switches hang until new motor is installed.
5. Remove the white plastic limit switch operators (note position of flat spots when removing).
6. Remove the four (4) screws on the back side of the motor and remove.
7. Install new motor – secure with four screws, reattach front cam arm and insert pin, (see instruction for proper arm and cam pin placement). Reattach cam switch bracket, put on operators (see instruction for correct positioning), plug new wires into capacitor, (110v unit yellow goes on left side, black on the right side, 220v units yellow left side, red right side).

Motor removal older units

1. Remove the roll pin or front cam pin, to release the actuator motor from the front cam and lower the water plate.
2. Disconnect the motor and capacitor wiring. Note: If the wire connectors cannot be removed, cut the wires as close to the connectors as possible.
3. Remove the actuator motor, motor shaft extension (if provided) and capacitor.
4. Remove the actuator toggle switch from the switch mounting bracket.

New motor installation

1. Position the actuator toggle switch in the new switch support and secure with the switch nut.
2. Mount the switch support and motor mounting bracket (See note) to the motor with two #8-32 x 3/8" long screws. (See illustration "A")
Note: The motor bracket is only required for some early models, where the motor mounting holes do not match the holes provided in the control box. See illustration "B" for some additional requirements for these early models.
3. Position the actuator motor shaft sleeve on the motor shaft and install the motor/switch assembly in the control box. Place the motor shaft through the hole in the back of the box and into the cam hole. (See illustration "A")
4. Position the front cam and install the front cam pin. Attach the motor with the #8-32 x 3/8" screws provided. (**Note! See page 4**)
5. Attach the capacitor to the control box with a #8-32 x 5/8 screw and locknut. Attach axial lead capacitors using the cable tie provided. Make all wiring connections. Note: Cut off actuator motor terminal connectors and strip wire to use with axial lead capacitors. (See illustration "C" for wiring schematic)

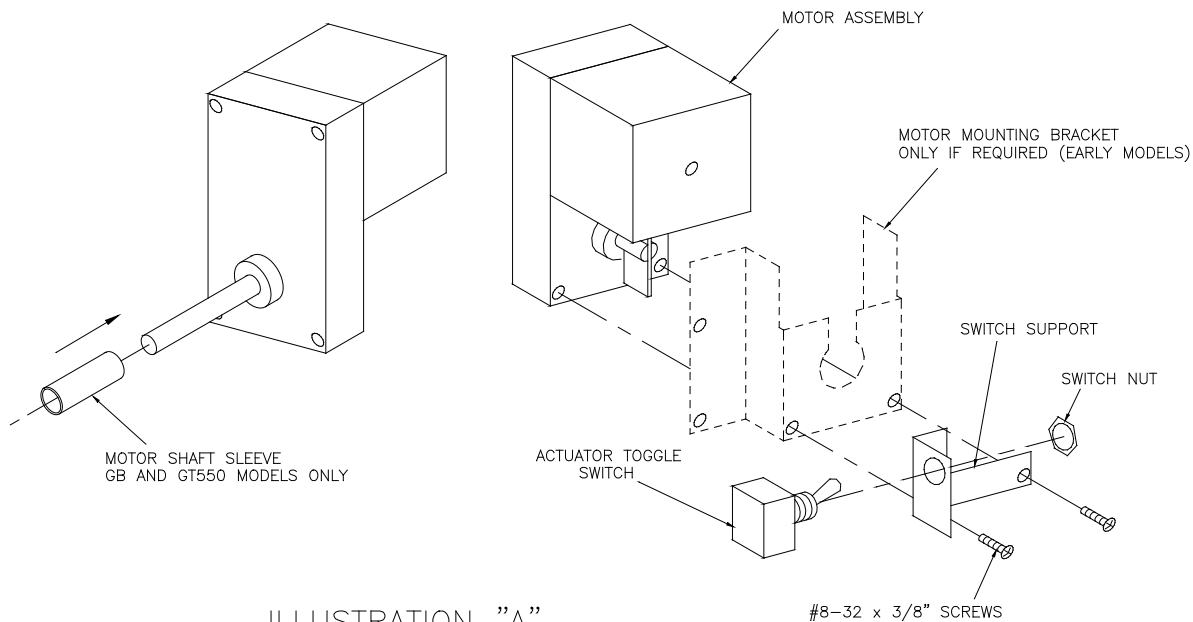
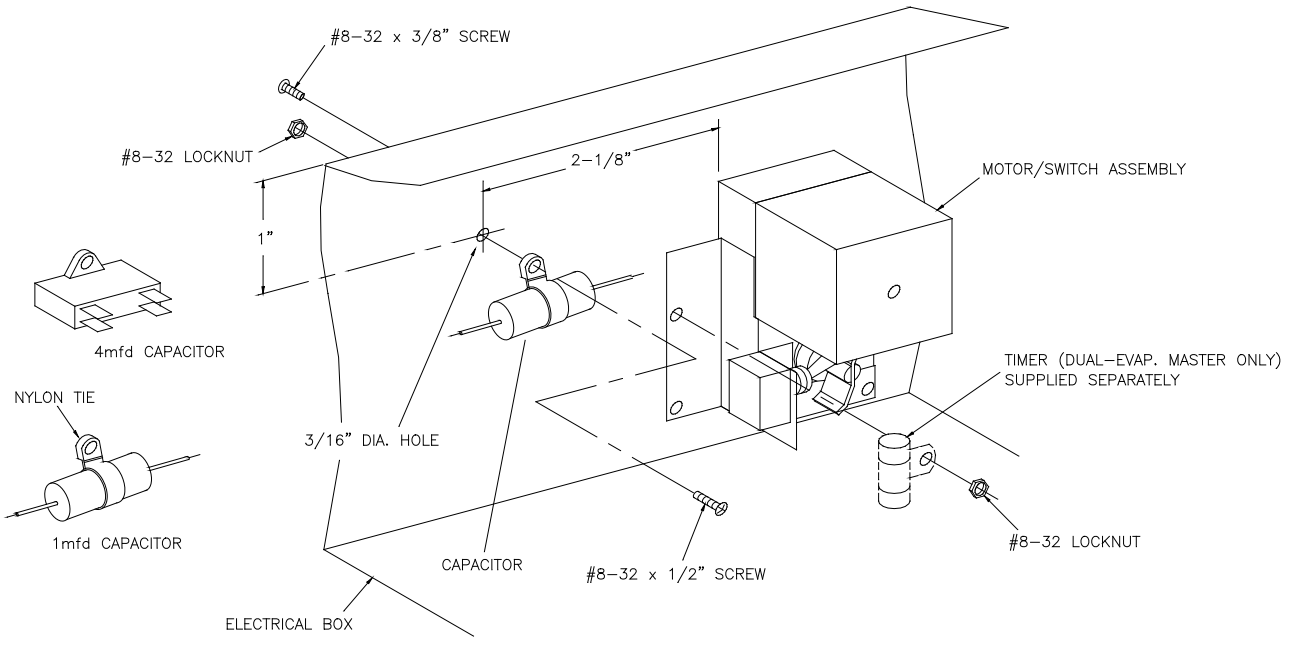


ILLUSTRATION "A"



CLASSIC INSTALLATION

ILLUSTRATION "B"

