

Instructions

Reliability Upgrade Kit

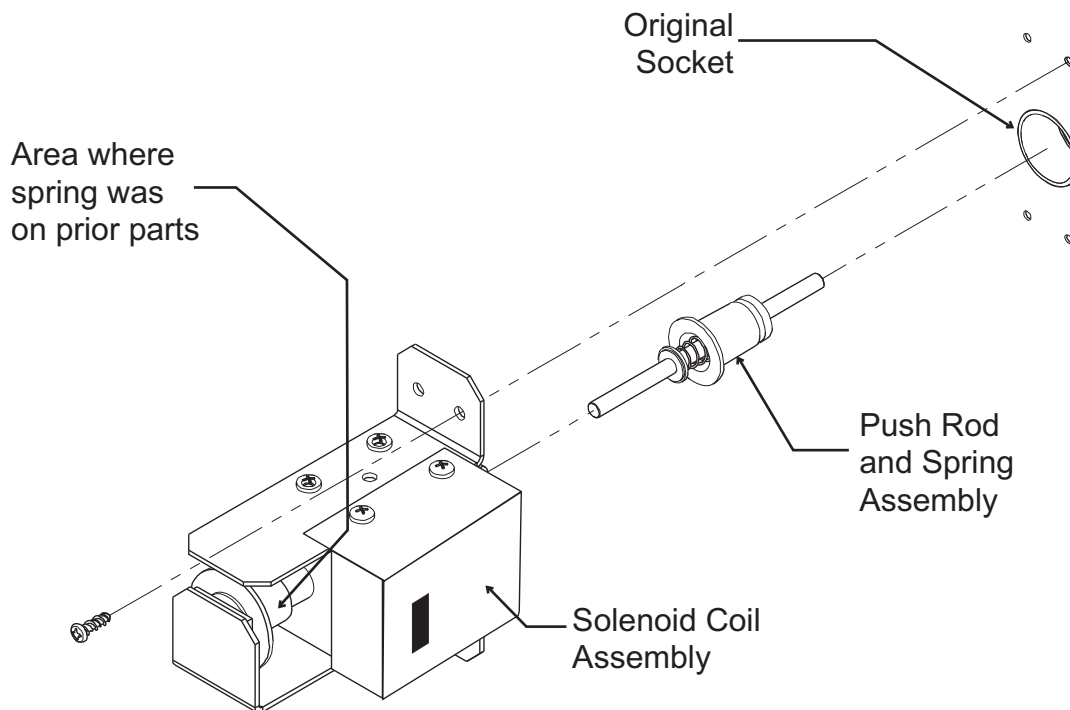
Applies to models: C0322, C0330, C0522, C0530, C0630, C0830, C1030, C1448, C1848, C2148, EH130, EH222, EH330, EH430. All cube sizes and voltages. Models with 2 evaporators will use 2 kits.

Does **not** apply to CU1526, CU2026, CU3030. If changing a Harvest Assist Solenoid on one of these models, **do step 3 on this page only**.

Includes:

- Harvest Assist Solenoid Replacement
- TXV insulation replacement
- Removal of sound shield
- Adding identification stickers

1. Check machine for US flag or check mark sticker (☑) on the lower outside right corner of the unit. If present, the machine has already received an upgrade and does not need this kit. If not present continue with the upgrade. If installing a harvest assist only, do step 3 only.
2. Remove front panel, check for US flag or check mark sticker on control box or base. If none, proceed, if there is one, the machine has already received the upgrade and does not need this kit.
3. Follow the directions to replace the harvest assist solenoid - see next pages.
4. Remove the insulation covering the TXV (thermostatic expansion valve).
5. Install new TXV insulation from the kit by peeling off the plastic covering the adhesive, wrapping it over the top of the valve and tubing, then secure with cable ties from the kit.
6. Remove and discard the sound shield (white plastic shield over compressor compartment with molded in Scotsman logo). Do NOT discard evaporator cover.
7. Place 3 check mark stickers on unit: a) next to control box, b) on lower outside right edge of front panel, c) back of unit by serial plate. This designates that the unit has received the upgrade.
8. Reconnect electrical power.
9. Restart unit, confirm solenoid operation.
10. Return front panel to its normal position.



Note: This part may appear different than the one being replaced.

Before removal, confirm that the electrical plug to the harvest assist is in good condition and has not been replaced by individual quick connects. If there is damage or the plug is no longer on the harness, stop and return with a new high voltage harness.

General:

- A. Remove front panel or access controller.
- B. Harvest ice (if making ice).
- C. Shut machine off.
- D. Disconnect electrical power
- E. Determine model type and follow those instructions

All models **other than CU1526, CU2026 and CU3030:**

Units manufactured after mid 2009 (**hidden spring type**):

- 1. Direct replacement - unplug electrical connector, remove 4 screws holding old solenoid and push rod assembly from wall and replace both with new parts from the kit.
- 2. Plug electrical connector onto solenoid.
- 3. Go to step 4 on first page.

Units manufactured before mid 2009 (**visible spring on solenoid**):

1. Unplug electrical connector and remove screws holding original solenoid assembly to wall.
2. Install push rod and spring assembly into the socket in the evaporator compartment wall where the original solenoid's push rod when through. The cup on the assembly will fit into the socket in the wall.
3. Mount new solenoid to wall using the original screws.
4. Plug electrical connector onto solenoid.
5. Go to step 4 on first page.

Models CU1526, CU2026 and CU3030

1. Remove the mounting brackets from the kit's solenoid and attach the brackets that were shipped loose in the kit to the new solenoid.

Note: Brackets have different mounting holes for the CU models to position the solenoid further back.

2. Unplug unit from electrical power.

3. Remove door and top panel.

4. Unplug electrical connector from solenoid.

5. Remove cover from back panel.

Units manufactured after mid 2009 (**hidden spring type**):

6a. Remove 4 screws and old solenoid and push rod w/spring and install the new solenoid (with changed brackets) and push rod onto the ice machine.

Units manufactured before mid 2009 (**visible spring on solenoid**):

6b. Install push rod and spring assembly into the hole where the original solenoid's push rod went through.

6c. Mount new solenoid (with changed brackets) to wall using the original screws.

7. Plug electrical connector onto new solenoid.

8. Plug power cord back into electrical supply.

9. Return cover, door and top panel to unit.

10. Restart unit and check operation.