

## **Brilliance Pump Conversion**

---

**Use these instructions to convert an existing pump drain system to a condensate pump drain system.**

**Needed for installation: scissors, marker, sheet metal snips or grinder, zip ties**

**NOTE:** Prior to beginning installation, the machine must be unplugged and water to the machine should be shut off.

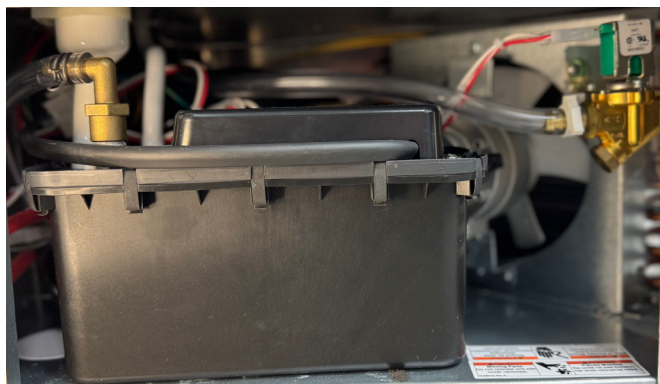
First, the old pump and components will need to be removed.

1. Remove pump switch and bracket.
2. Remove drain hose from the base of the machine.
3. Threaded studs for the old pump need to be removed. They are a Philips head screw that can be accessed from the bottom the machine. To remove them, you can tip the machine to gain access.

**NOTE:** Do not lay the machine on its side.

4. Unplug power cord and main harness from pump harness.
5. Remove pump from machine.
6. Cut along the dotted line on the template provided. Place the side of the template marked KEEP on the lower right corner of the back of the machine and trace out template with a marker. Remove back panel. Using a pair of sheet metal snips or a grinder cut back panel along traced line.
7. Reinstall back panel.
8. Plug in the sub harness into the pump harness.
9. Install Brass 90 to the top of the pump.

10. Remove liner from double sided tape (located on the bottom of the pump). Place pump in the bottom of the machine as pictured.



11. Connect power cord and main harness into pump harness.
12. Connect white drain tube to bottom of the bin. Add white clamp.
13. Install the white tube on to the vent of the pump. Route vent tube towards to the top of the machine. Use zip ties to secure vent tube.
14. Reinstall back panel.
15. Install new access panel to the back of the machine.
16. Route 3/8th drain tube through utility panel and connect to brass barb on pump.
17. Use hose clamp to secure hose.
18. Route drain tube to customers drain.

## **NEED SUPPORT?**

Scotsman Technical Service:  
800-533-6006 (available 24/7)

17-3929-01 Rev.A

**Scotsman**<sup>®</sup>