

---

# SERVICE BULLETIN

---

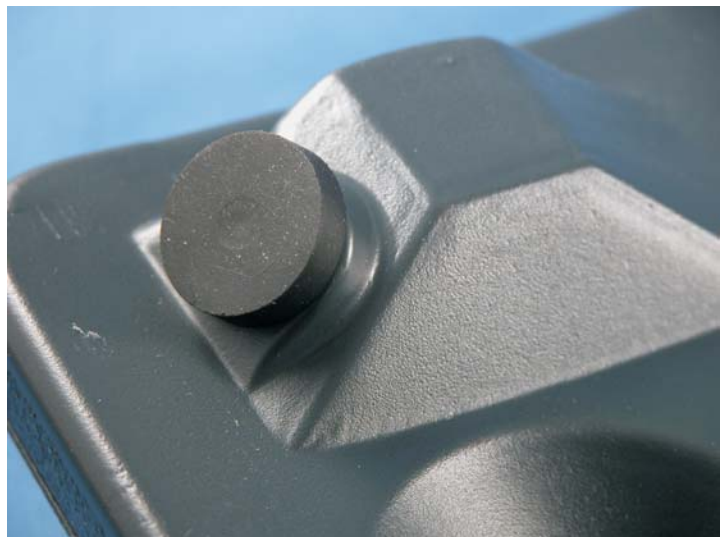
**Subject: Design change to CU1526, CU2026 and CU3030 Doors**

A rubber bumper has been added to the left and right bottom ends of the doors. They absorb the shock of the door closing, reducing damage from the impact.

The door part numbers did not change. The bumper part number is 02-4235-01.

The CU1526 and CU2026 door changed with production starting August 9, 2011 with serial number 11081320012338.

The CU3030 door changed with production starting August 23, 2011 with serial number 11081320014992.



*Bumper Mounted on Door*