

Scotsman®

ID150 / ID200 / ID250 - Ice Dispensers

Ice Only Counter Top Dispensers



ID250

Features

- Three sizes to fit the needs of any application.
- Heavy-duty agitator motor for long life.
- Adjustable off-cycle agitation for various ice forms and ambient conditions.
- Heavy-duty agitator reduces ice jams and bridging.
- Reliably dispenses nugget ice with confidence.
- Insulated, heavy-duty drip tray prevents condensation.
- Greater dispensable ice for periods of peak demand.
- All components front accessible.



ID200



ID150

ID150 / ID200 / ID250 - Ice Dispensers



Machine Stands



For installation where counter space is not available to accommodate an ice only dispenser unit, the IOBMS22 & IOBMS30 machine stands are the solution.



Certification

CERTIFIED
ISO
9001:2008

REVIT
by Scotsman

c UL US

NSF



Warranty

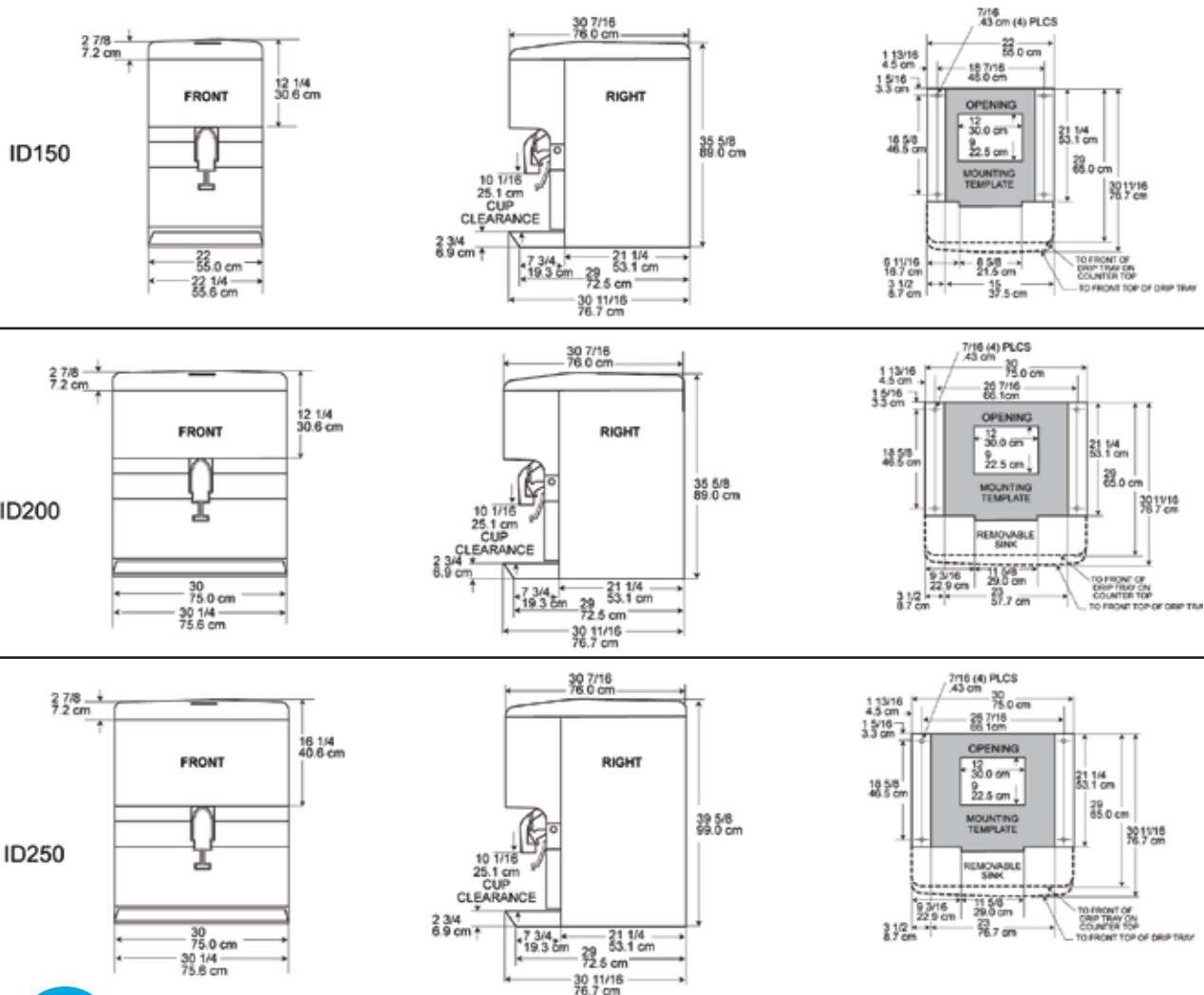
- 1 year labor on all components.
- 2 years parts on all components.
- Warranty valid in North, South & Central America for commercial installations.
- Contact factory for warranty in other regions.

Scotsman®

ID150 / ID200 / ID250 - Ice Dispensers

Ice Only Counter Top Dispensers

Installation Note: Allow 6" space at left, back and right side for ventilation and utility connections. Recommended counter opening size 9" x 12" for utilities and tubing. Opening can be located anywhere within the shaded area.



Specifications

| Model Number | Dimensions* (W x D x H) | Storage Capacity (lb/kg) | Actuation | Basic Electrical Volts/Hz/Phase | Max. Fuse Size or HACR Circuit Breaker (amps) | Circuit Wires | Min. Circuit Ampacity |
|--------------|-------------------------|--------------------------|-----------|---------------------------------|---|---------------|-----------------------|
| ID150 | 22" x 30" x 35.63" | 150/68 | Push Bar | 115/60/1 | 15 | 2 | Cord |
| ID200 | 30" x 30" x 35.63" | 200/91 | Push Bar | 115/60/1 | 15 | 2 | Cord |
| ID250 | 30" x 30" x 39.63" | 250/114 | Push Bar | 115/60/1 | 15 | 2 | Cord |

All units with stainless steel finish and plastic front and top panels. Not designed for outdoor installation.
*Add 4" height for legs.



All Models

| Model # | Carton (W x D x H) | Weight (lb/kg) |
|---------|--------------------|----------------|
| ID150 | 25" x 35" x 46" | 150/68 |
| ID200 | 35" x 36" x 46" | 195/89 |
| ID250 | 35" x 36" x 46" | 200/91 |



Accessories

| Model Number | Description |
|--------------|--|
| IOBDM522 | Machine stand for ID150 |
| IOBDM530 | Machine stand for ID200 & ID250 |
| KNUGDIV | Field installed nugget ice kit for all ID dispensers |
| KWGFID | Field installed water glass filler kit for all ID dispensers |

• 101 Corporate Woods Parkway, Vernon Hills, IL 60061 •

• 1-800-SCOTSMAN • Fax: 847-913-9844 • www.scotsman-ice.com • customer.relations@scotsman-ice.com •

Scotsman[®]